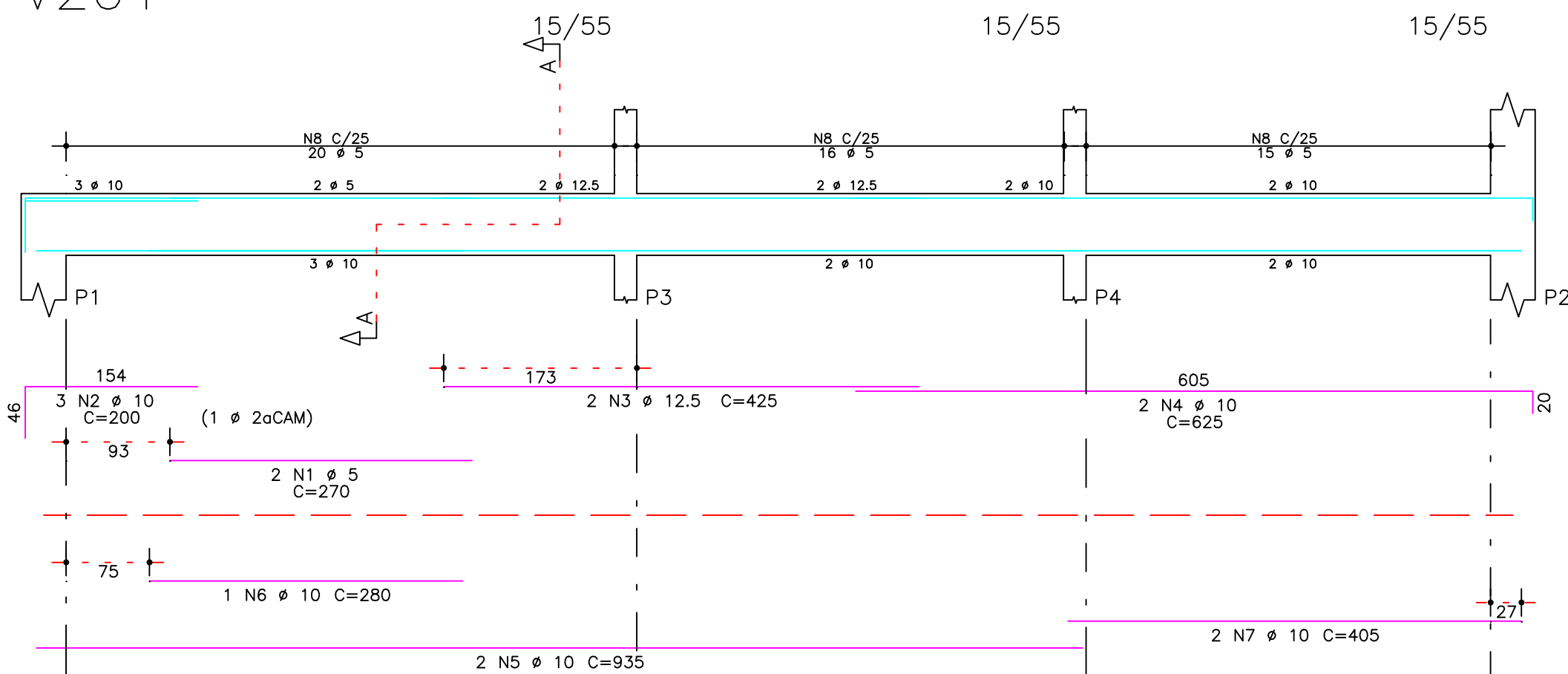
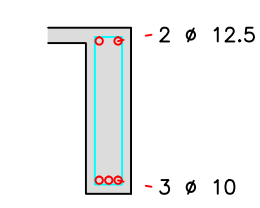


V201

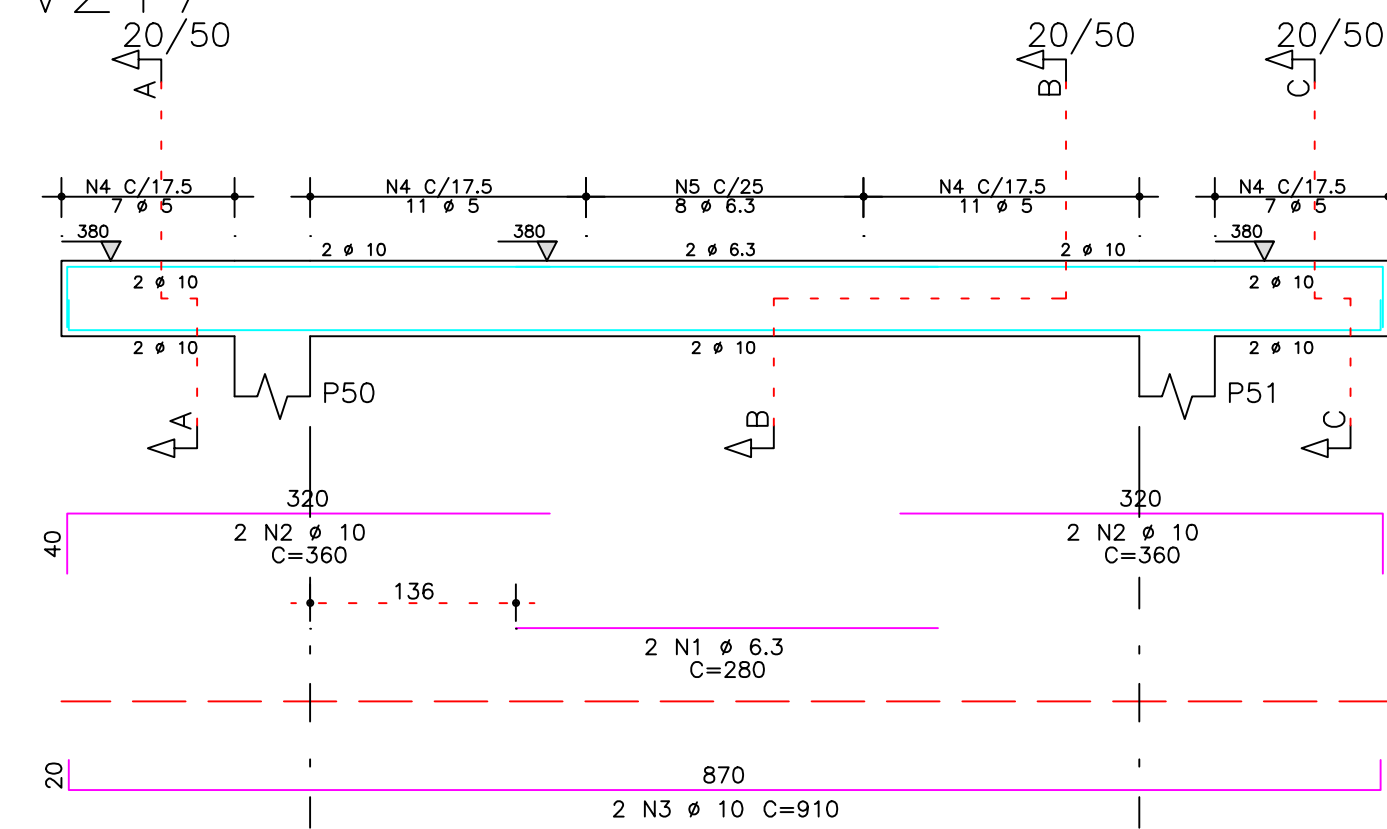


Corte A

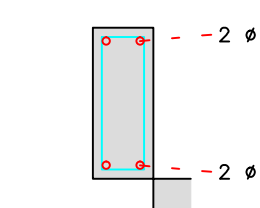


51 N8 #5 C=131

V217

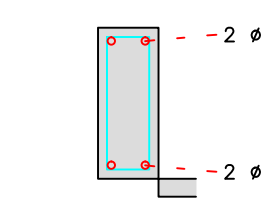


Corte A



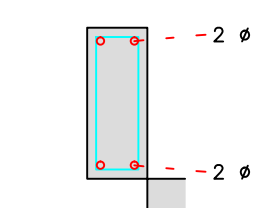
7 N4 #5 C=131

Corte B



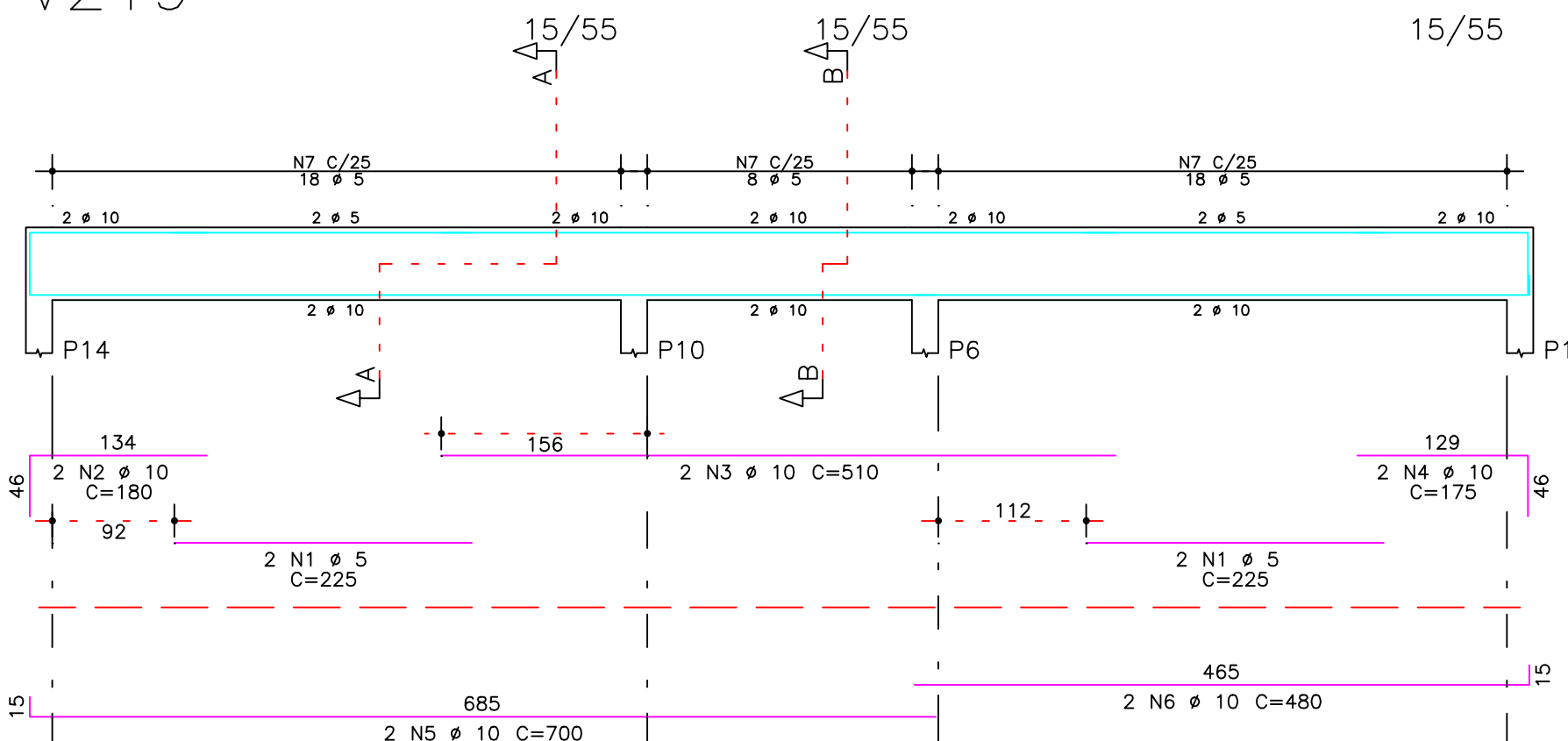
22 N4 #5 C=131

Corte C

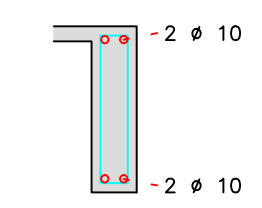


7 N4 #5 C=131

V219

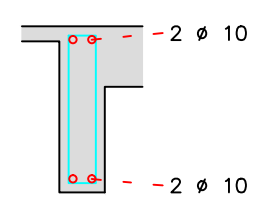


Corte A



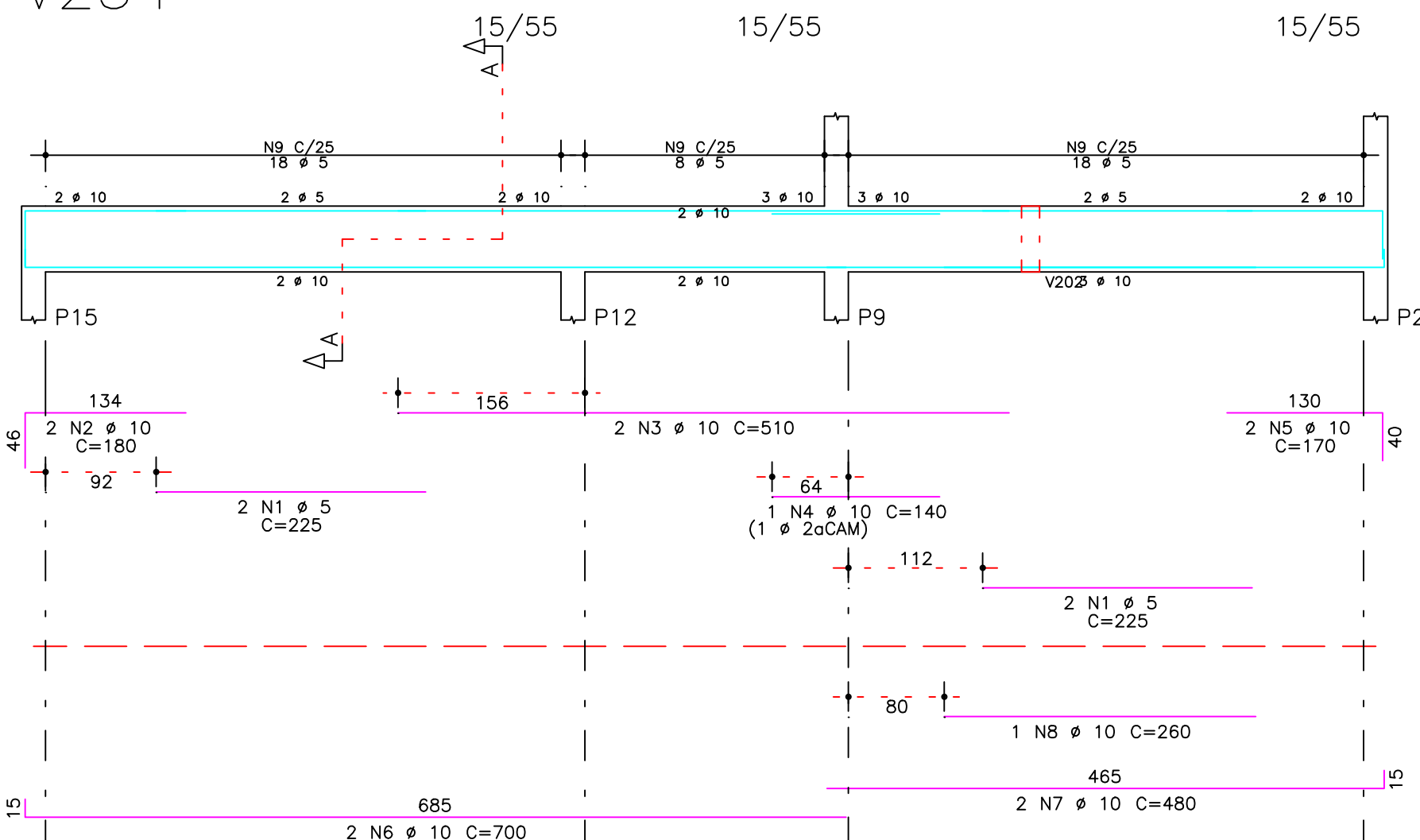
36 N7 #5 C=131

Corte B

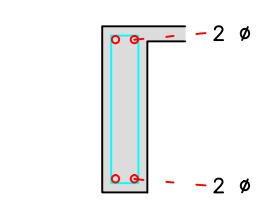


8 N7 #5 C=131

V234

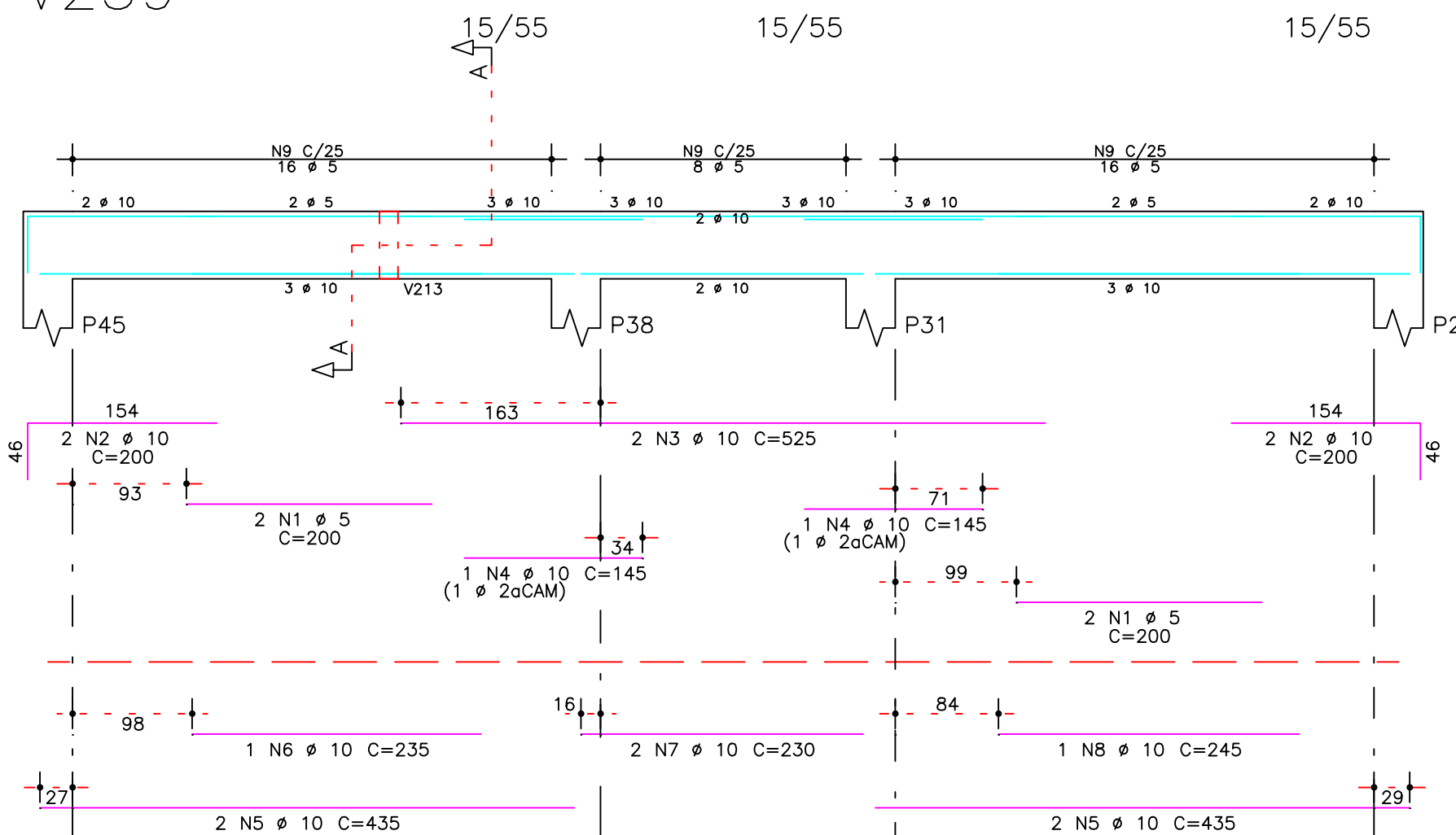


Corte A

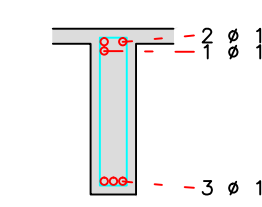


44 N9 #5 C=131

V239

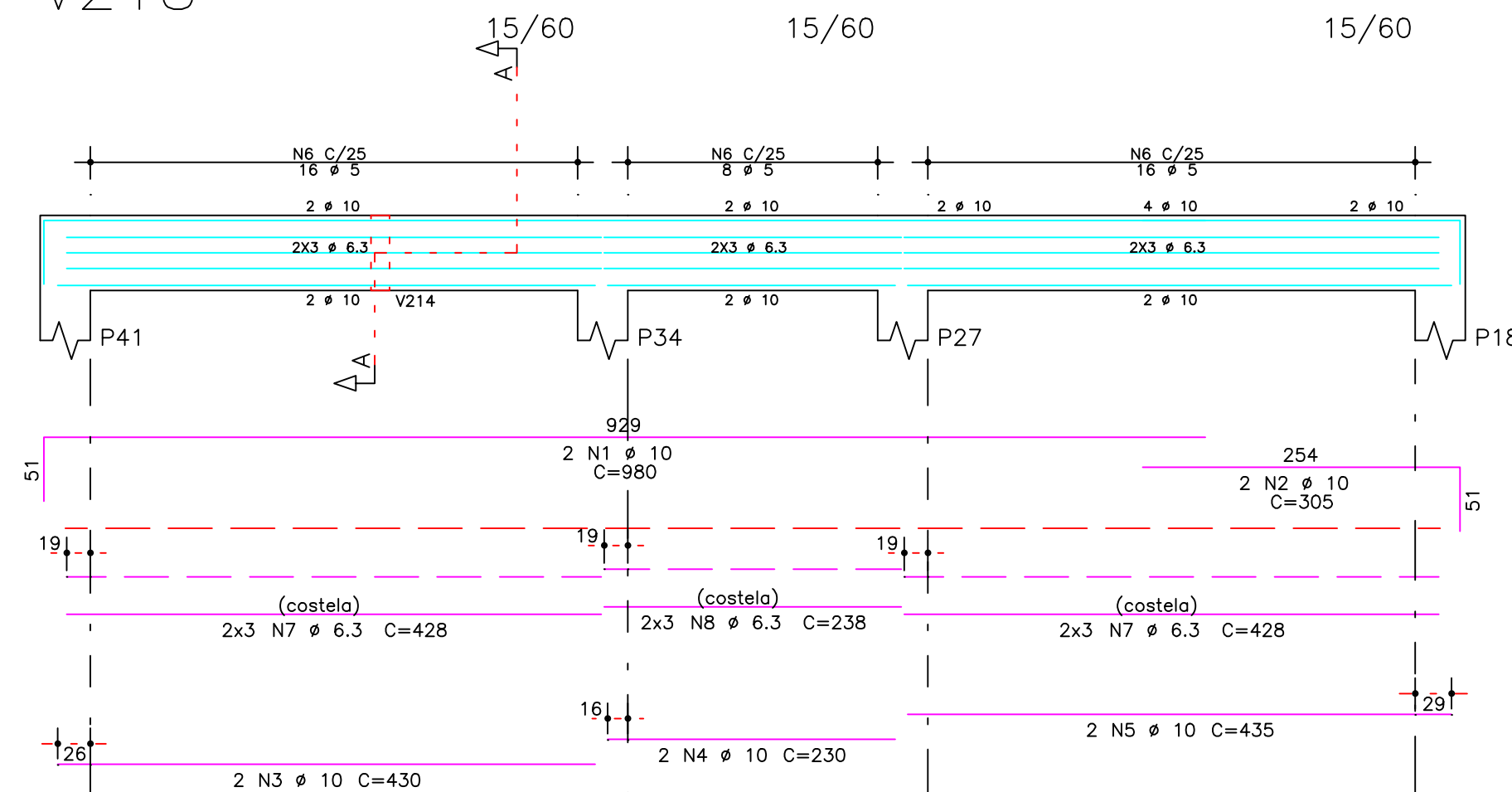


Corte A

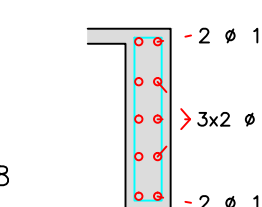


40 N9 #5 C=131

V218

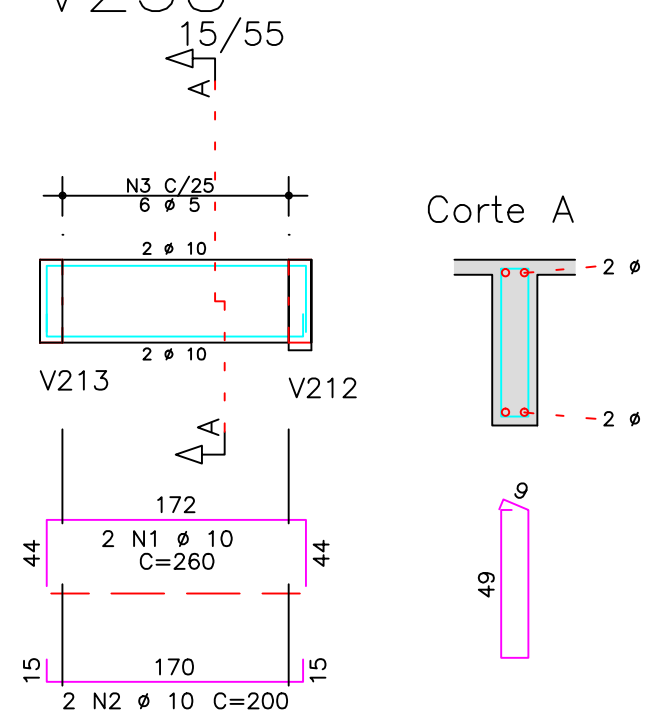


Corte A

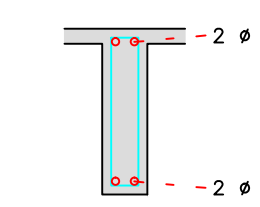


40 N6 #5 C=141

V238

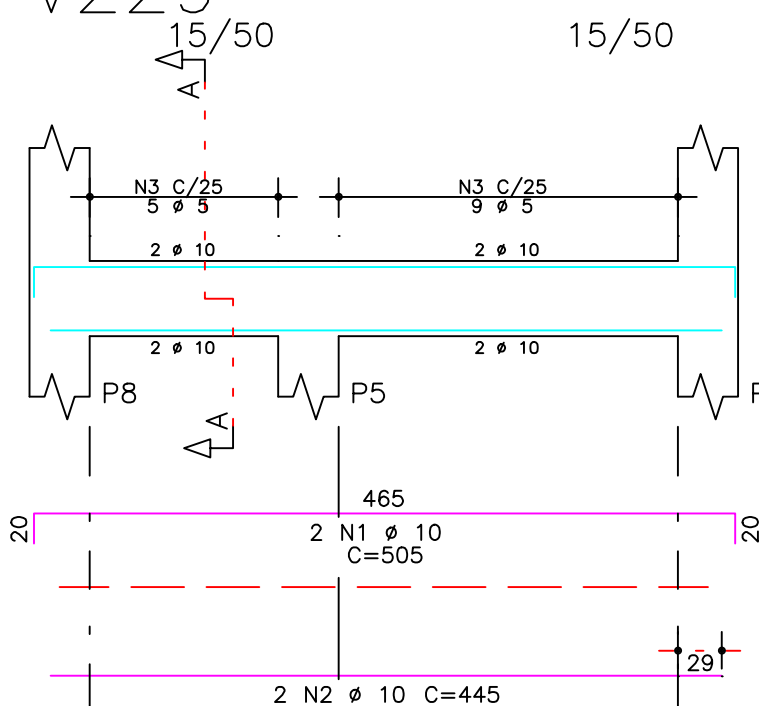


Corte A

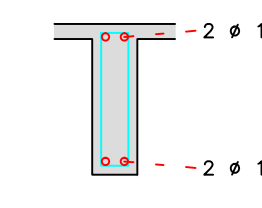


6 N3 #5 C=131

V229

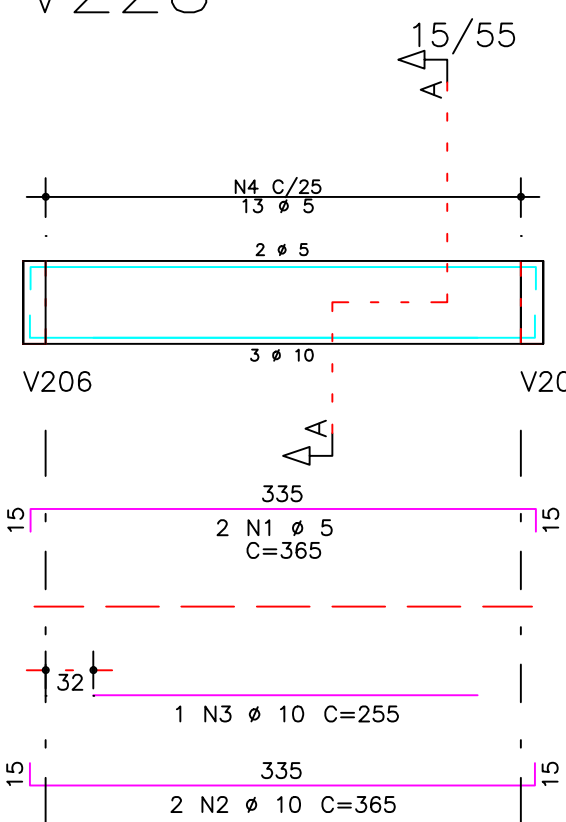


Corte A

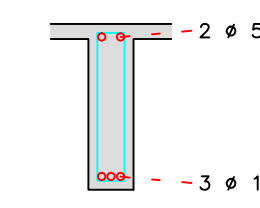


14 N3 #5 C=121

V228

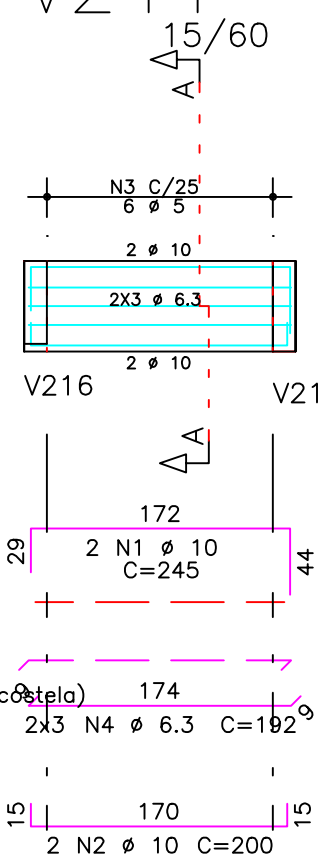


Corte A

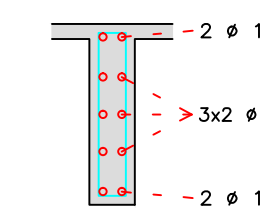


13 N4 #5 C=131

V244

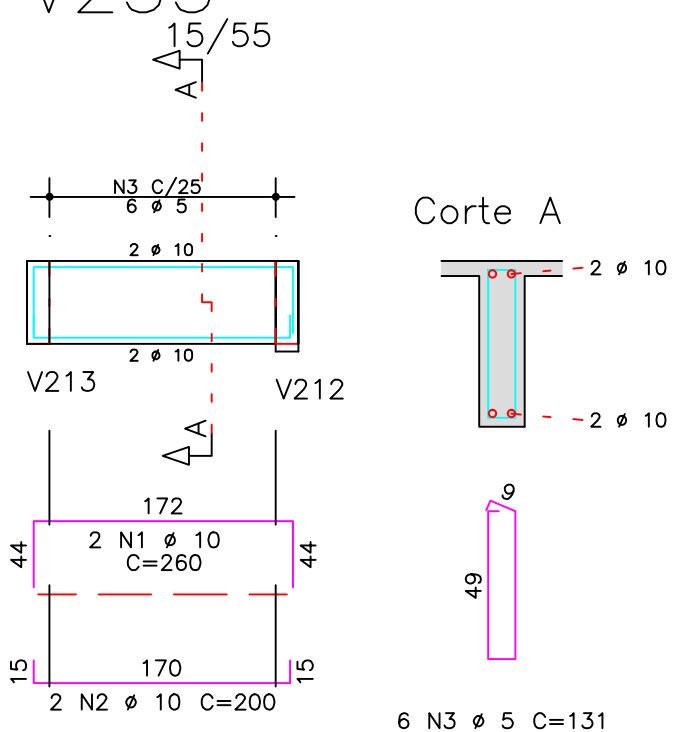


Corte A

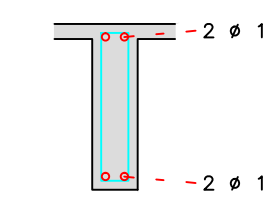


6 N3 #5 C=141

V235

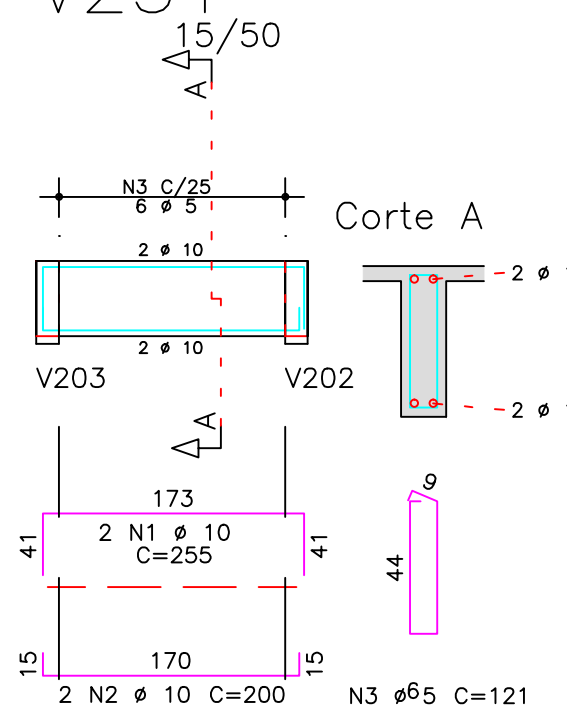


Corte A

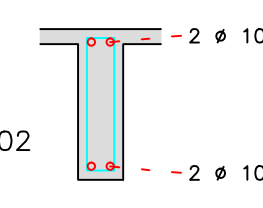


6 N3 #5 C=131

V231



Corte A



3 N3 #5 C=121

AÇO	POS	BIT (mm)	QUANT	COMPRIMENTO UNIT (cm)	TOTAL (cm)
V201					
60B	1	5	2	270	540
50A	2	10	3	200	600
50A	3	12,5	2	425	850
50A	4	10	2	625	1250
50A	5	10	2	935	1870
50A	6	10	1	280	280
50A	7	10	2	405	810
60B	8	5	51	131	6681
V217					
50A	1	6,3	2	280	560
50A	2	10	4	360	1440
50A	3	10	2	910	1820
60B	4	5	36	131	4716
50A	5	6,3	8	132	1056
V218					
50A	1	10	2	980	1960
50A	2	10	2	305	610
50A	3	10	2	430	860
50A	4	10	2	230	460
50A	5	10	2	435	870
60B	6	5	40	141	5640
50A	7	6,3	12	428	5136
50A	8	6,3	6	238	1428
V219					
60B	1	5	4	225	900
50A	2	10	2	180	360
50A	3	10	2	510	1020
50A	4	10	2	175	350
50A	5	10	2	700	1400
50A	6	10	2	480	960
60B	7	5	44	131	5764
V228					
60B	1	5	2	365	730
50A	2	10	2	365	730
50A	3	10	1	255	255
60B	4	5	13	131	1703
V229					
50A	1	10	2	505	1010
50A	2	10	2	445	890
60B	3	5	14	121	1694
V231					
50A	1	10	2	255	510
50A	2	10	2	200	400
60B	3	5	6	121	726
V234					
60B	1	5	4	225	900
50A	2	10	2	180	360
50A	3	10	2	510	1020
50A	4	10	1	140	140
50A	5	10	2	170	340
50A	6	10	2	700	1400
50A	7	10	2	480	960
50A	8	10	1	260	260
60B	9	5	44	131	5764
V235					
50A	1	10	2	260	520
50A	2	10	2	200	400
60B	3	5	6	131	786
V238					
50A	1	10	2	260	520
50A	2	10	2	200	400
60B	3	5	6	131	786
V239					
60B	1	5	4	200	800
50A	2	10	4	200	800
50A	3	10	2	525	1050
50A	4	10	2	145	290
50A	5	10	4	435	1740
50A	6	10	1	235	235
50A	7	10	2	230	460
50A	8	10	1	245	245
60B	9	5	40	131	5240
V244					
50A	1	10	2	245	490
50A	2	10	2	200	400
60B	3	5	6	141	846
50A	4	6,3	6	192	1152

AÇO	BIT (mm)	COMPR (m)	PESO (kg)
60B	5	442	68
50A	6,3	93	23
50A	10	327	202
50A	12,5	9	8
Peso Total	60B =		68 kg
Peso Total	50A =		233 kg

O acesso ao Modelo Estrutural em dimensão pode ser executado pelo QR CODE ao lado, podendo acessar via celulares, tablets e quaisquer outros dispositivos.

Schuring & Schuring Ltda.
Escritório Técnico B.E.SCHURING - Projetos de Engenharia
Av. XV de Novembro, 489 - Porto 2o. Andar - Cuiabá MT
Fone:(065) 321 9959 - Fax:(065) 623 5066 - Email - schuring@terra.com.br

PROJETO: **PROJETO ESTRUTURAL**

PROPRIETÁRIO: **PREFEITURA MUNICIPAL VARZEA GRANDE MT**

RESP. TEC. EXECUÇÃO: **Benedito Elias Schuring Eng. Civil - CREA 715/D-MT**

AUTORES DO PROJETO: **André Luiz Schuring Eng. Civil - CREA 8697/D-MT**

OBRA: **PREFEITURA MUNICIPAL DE VARZEA GRANDE MT**
Unid. Básica de Saúde UBS-MATILDE CURVO DE MORAES
END.: **Av. dos Bandeirantes.**
Conj: **Habit. José Carlos Guimarães, Várzea Grande-MT**

ASSUNTO: **COBERTURA DET ARM VIGA**

PECAS DETALHADAS: **V201 / V217 / V218 / V219 / V228 / V229 V231 / V234 / V235 / V238 / V239 / V244**

FOK: **DIREITOS AUTORES RESERVADOS VERIFICAR MEDIDAS NA OBRA**

ESCALA: **1:50**

DATA: **15/07/2019**

FOLHA No. **22**